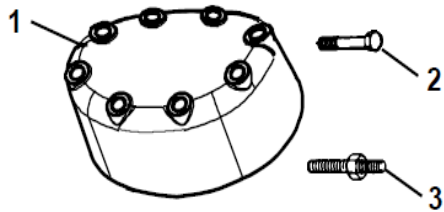
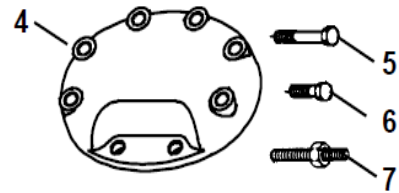


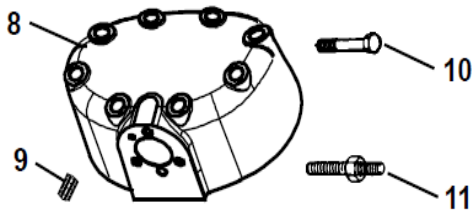
## 5. CYLINDER HEADS (4 CYLINDER)



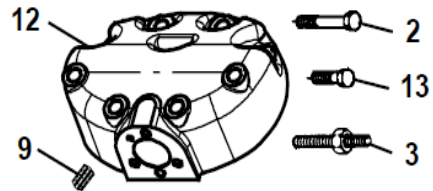
STANDARD HEAD



STANDARD SHAVED HEAD



UNLOADER HEAD



UNLOADER SHAVED HEAD

Item	Part Number	Description	Qty
1	17-44731-00	Cylinder Head - (No Unloader)	1
2	17-44117-00	Capscrew, Hex Head, 3/8-16 x 2-1/4 Inches Long - SAE Grade 8	A/R
3	17-57010-01	Stud, Cylinder Head, 3/8-16 x 2-1/2 Inches Long	A/R
4	17-21040-00	Cylinder Head - (No Unloader - Shaved)	1
5	17-40034-05	Capscrew, Hex Head, 3/8-16 x 2 Inches Long - SAE Grade 8	A/R
6	17-40037-05	Capscrew, Hex Head, 3/8-16 x 1 Inch Long	2
7	17-44732-00	Stud, Cylinder Head, 3/8-16 x 2 Inches Long	A/R
8	17-21041-00	Cylinder Head - (Unloader - Suction Cutoff)	1
	17-40104-05	Cylinder Head - (Unloader - Hot Gas Bypass)	
9	17-40108-00	Strainer	1
10	17-40018-05	Capscrew, Hex Head, 3/8-16 x 3 Inches Long - SAE Grade 8	A/R
11	17-44017-01	Stud, Cylinder Head, 3/8-16 x 4-1/4 Inches Long	A/R
12	17-44760-00	Cylinder Head - (Unloader - Hot Gas Bypass - Shaved)	1
2	17-44117-00	Capscrew, Hex Head, 3/8-16 x 2-1/4 Inches Long - SAE Grade 8	A/R
13	AA06GR232	Capscrew, Hex Head, 3/8-16 x 1-1/4 Inches Long - SAE Grade 8	2
3	17-57010-01	Stud, Cylinder Head (Shaved), 3/8-16 x 2-1/2 Inches Long	A/R